

Three-Dimensional Stress Cardiac Magnetic Resonance Perfusion Imaging for the Detection of Coronary Artery Disease

R. Manka¹, C. Jahnke², S. Kozerke¹, V. Vitonis¹, G. Crelier¹, R. Gebker², B. Schnackenburg², P. Boesiger¹, E. Fleck², and I. Paetsch²

¹Institute for Biomedical Engineering, University and ETH Zurich, Zurich, Zurich, Switzerland, ²German Heart Institute Berlin

Introduction:

Adenosine stress cardiac magnetic resonance (CMR) first pass perfusion is highly accurate for the detection of myocardial ischemia. However, current two-dimensional multi-slice acquisitions have limited spatial coverage of the heart and, thus, do not allow complete visualization of myocardial ischemic burden. The purpose of this study was to evaluate a new dynamic three-dimensional (3D) perfusion scan technique exploiting data correlation in k-space and time with joint sensitivity-encoding (k-t SENSE) and determined its value for the detection of coronary artery disease (CAD).

Methods:

130 patients with known or suspected CAD underwent a 3.0 Tesla CMR examination using 10x k-t SENSE (1,2) (TR/TE/flip angle: 1.8ms/0.7ms/15°, saturation prepulse delay: 150 ms, partial Fourier acquisition, voxel size: 2.3x2.3x5.0 mm³). Perfusion scans were obtained under adenosine stress (140 µg/kg/min for 6 min; 0.1mmol/kg Gd-DTPA) and at rest. Quantitative invasive coronary angiography defined significant CAD as ≥50% luminal narrowing. For visual analysis, 3D CMR perfusion scans were classified as pathologic if ≥1 segment showed an inducible perfusion deficit (>25% transmural). Overall image quality of stress and rest 3D CMR perfusion scans was graded on a scale between 1 and 4 (1= nondiagnostic, 2= poor, 3= good, 4= excellent).

Results:

Visual analysis of 3D CMR perfusion resulted in a sensitivity, specificity and diagnostic accuracy of 91.3, 70.5 and 81.5%, respectively. Sensitivity for the detection of single, double and triple vessel disease was 90.2%, 95.0% and 87.5%. The mean visual score of 3D-CMR perfusion imaging was 3.4 ± 0.6 during adenosine stress and 3.5 ± 0.6 at rest ($p=ns$) (Figure 1).

Conclusions: Dynamic 3D-CMR stress perfusion imaging proved to be a robust method providing high image quality and high diagnostic accuracy for the detection of significant CAD in a routine clinical referral population.

References:

1. Plein S, Ryf S, Schwitter J, Radjenovic A, Boesiger P, Kozerke S. Dynamic contrast-enhanced myocardial perfusion MRI accelerated with k-t sense. *Magn Reson Med* 2007;58:777-85.
2. Tsao J, Boesiger P, Pruessmann KP. k-t BLAST and k-t SENSE: dynamic MRI with high frame rate exploiting spatiotemporal correlations. *Magn Reson Med* 2003;50:1031-42.

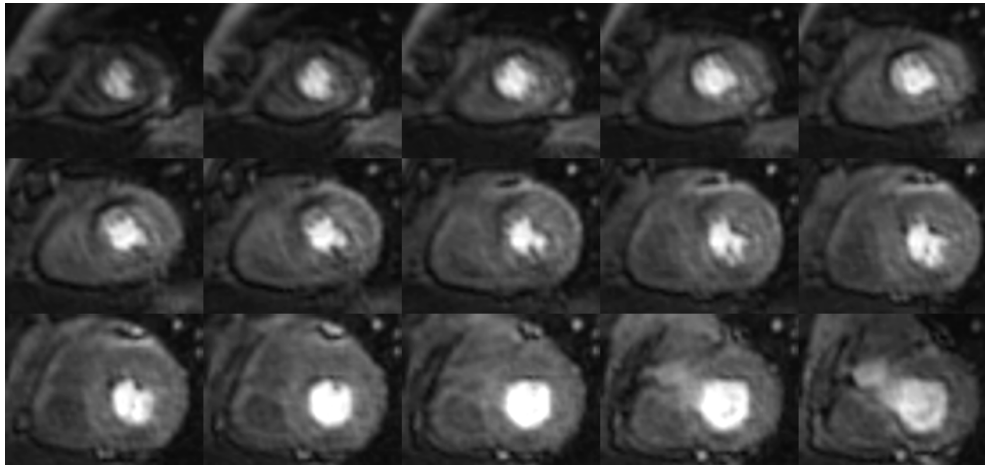


Figure 1:
Consecutive slices of a dynamic 3D-CMR stress perfusion scan; apical (top left) to basal (bottom right). Anterior-anteroseptal hypoperfusion from apical to equatorial slices.